

49/27

PUD Lakes of Boynton Beach Part A

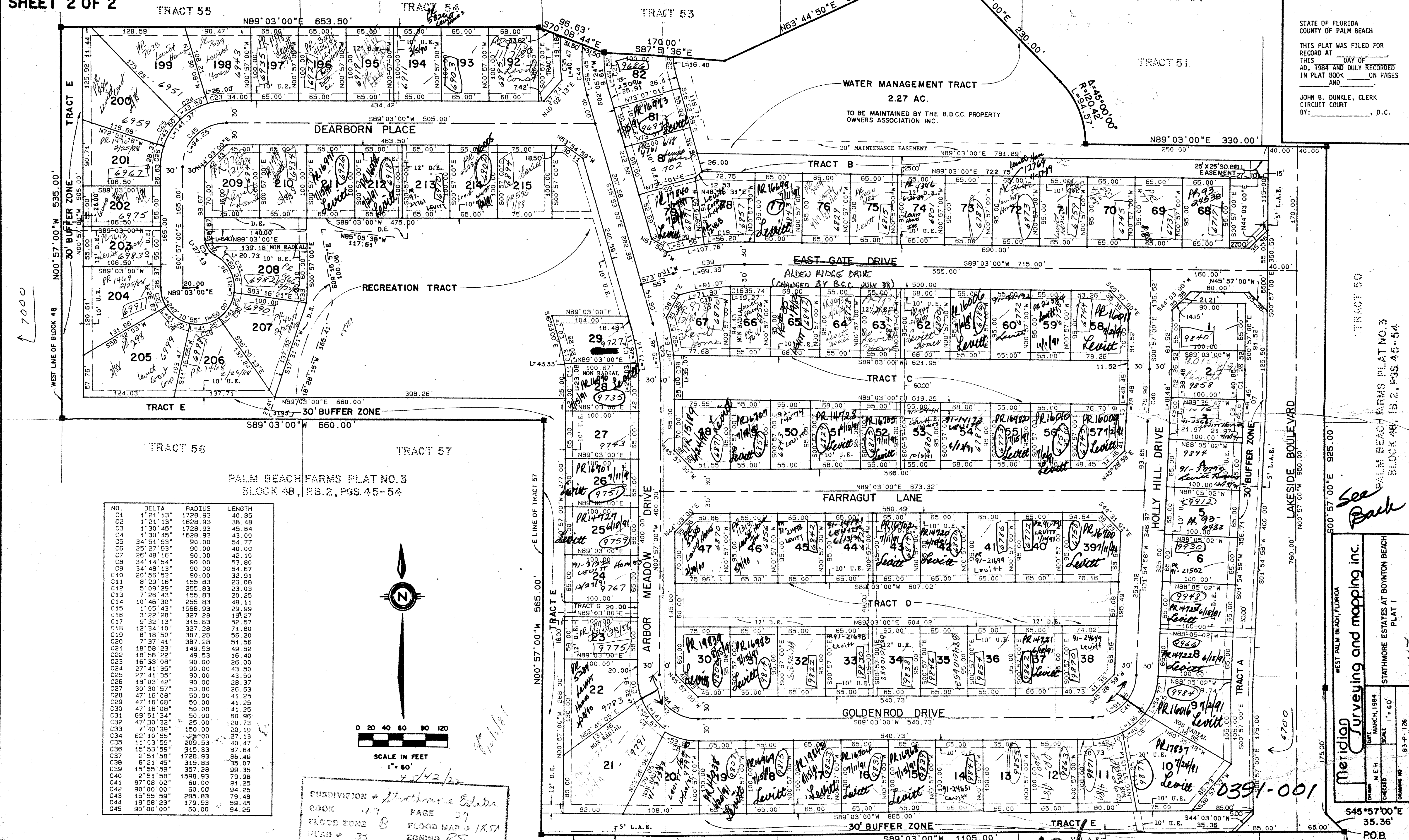
49/27

STRATHMORE ESTATES AT BOYNTON BEACH PLAT I

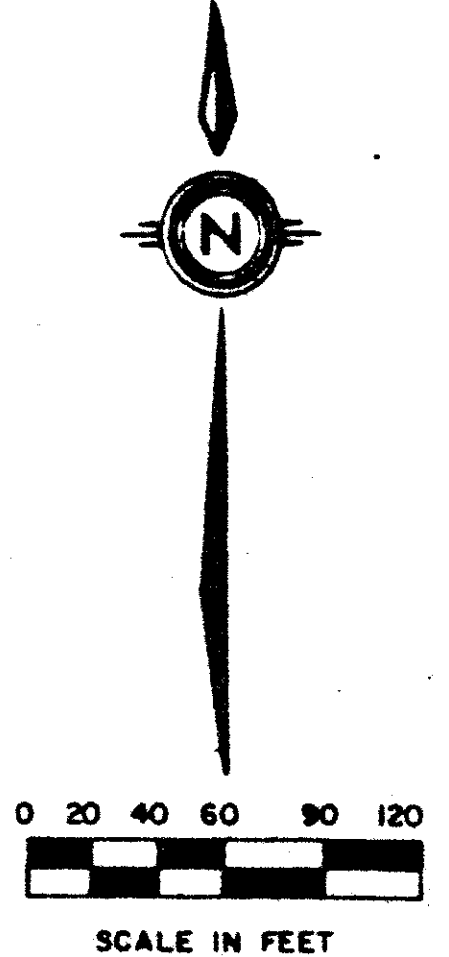
PART OF LAKES OF BOYNTON BEACH, A P.U.D.
SITUATE IN SECTION 22, TOWNSHIP 45, SOUTH, RANGE 42 EAST, BEING A REPLAT OF A PORTION OF BLOCK 48
PALM BEACH FARMS PLAT NO. 3 (PLAT BOOK 2, PAGES 45 THROUGH 54) PALM BEACH COUNTY, FLORIDA.

SHEET 2 OF 2

STATE OF FLORIDA
COUNTY OF PALM BEACH
THIS PLAT WAS FILED FOR
RECORD AT _____ DAY OF
MARCH, 1984 AND DULY RECORDED
IN PLAT BOOK _____ ON PAGES
_____ AND _____
JOHN B. DUNKLE, CLERK
CIRCUIT COURT
BY: _____, D.C.



NO.	DELTA	RADIUS	LENGTH
01	1' 21" 13"	1728.93	30.48
02	1' 30" 45"	1628.93	34.00
03	1' 30" 45"	1628.93	34.00
04	1' 30" 45"	1628.93	34.00
05	1' 30" 45"	1628.93	34.00
06	1' 30" 45"	1628.93	34.00
07	1' 30" 45"	1628.93	34.00
08	1' 30" 45"	1628.93	34.00
09	1' 30" 45"	1628.93	34.00
10	1' 30" 45"	1628.93	34.00
11	1' 30" 45"	1628.93	34.00
12	1' 30" 45"	1628.93	34.00
13	1' 30" 45"	1628.93	34.00
14	1' 30" 45"	1628.93	34.00
15	1' 30" 45"	1628.93	34.00
16	1' 30" 45"	1628.93	34.00
17	1' 30" 45"	1628.93	34.00
18	1' 30" 45"	1628.93	34.00
19	1' 30" 45"	1628.93	34.00
20	1' 30" 45"	1628.93	34.00
21	1' 30" 45"	1628.93	34.00
22	1' 30" 45"	1628.93	34.00
23	1' 30" 45"	1628.93	34.00
24	1' 30" 45"	1628.93	34.00
25	1' 30" 45"	1628.93	34.00
26	1' 30" 45"	1628.93	34.00
27	1' 30" 45"	1628.93	34.00
28	1' 30" 45"	1628.93	34.00
29	1' 30" 45"	1628.93	34.00
30	1' 30" 45"	1628.93	34.00
31	1' 30" 45"	1628.93	34.00
32	1' 30" 45"	1628.93	34.00
33	1' 30" 45"	1628.93	34.00
34	1' 30" 45"	1628.93	34.00
35	1' 30" 45"	1628.93	34.00
36	1' 30" 45"	1628.93	34.00
37	1' 30" 45"	1628.93	34.00
38	1' 30" 45"	1628.93	34.00
39	1' 30" 45"	1628.93	34.00
40	1' 30" 45"	1628.93	34.00
41	1' 30" 45"	1628.93	34.00
42	1' 30" 45"	1628.93	34.00
43	1' 30" 45"	1628.93	34.00
44	1' 30" 45"	1628.93	34.00
45	1' 30" 45"	1628.93	34.00
46	1' 30" 45"	1628.93	34.00
47	1' 30" 45"	1628.93	34.00
48	1' 30" 45"	1628.93	34.00
49	1' 30" 45"	1628.93	34.00
50	1' 30" 45"	1628.93	34.00



SUBDIVISION *Strathmore Estates*
BOOK *47* PAGE *27*
FLOOD ZONE *B* FLOOD MAP # *1851*
GRID # *35* ZONING *RS*
SE *PUD* ZIP CODE *33431*
PUD NAME *Strathmore Estates At Boynton Beach Plat I*

49/27
STRATHMORE ESTATES AT BOYNTON BEACH PLAT I

Meridian Surveying and mapping inc.
DATE MARCH, 1984
SCALE 1" = 60'
DRAWING NO. 83-P-126

DRAWING NUMBER

DRAWING NUMBER

DRAWING NUMBER

PLAN HOLD CORPORATION • IRVINE, CALIFORNIA
RECORDED BY NUMBER 07548